

General Body and Head Wrist buddy Instructions - ITHWL

If using the JEF format, you may need to rotate your design to suit your machine.

If your machine can't rotate the design, you will need software.

There is a free program called Toolshed see link below.

<https://www.shop.dzgns.com/products/embroidery-tool-shed?srltid=AfmBOopVkBgZDgDCdNFIO9dINfWp77onvXf2PFsMsX0MhMqkcl-OzQFL>

These instructions are **step by step through the project**, however we may have used photos from other **testing stitchouts in the testing process**, the fabrics may differ, however the steps are the same..

Foot height disclaimer

Using cuddle fleece / fur / minky, etc, can increase height and bulk in the seams.

Testers who used the Janome 500E machines used the free motion foot, a sample below to help assist with the bulk and the height.



Please read the stitch map **carefully**, the name of the thread is the **step or colour** instruction as well, for example, position tackdown, detail or finish, WSS – add washaway stabiliser, cutting line, flip and fold placement, flip and fold tackdown, move foot, trim fabric, flip fabric over, etc.

Supplies

- Leave in stabiliser – I don't recommend tear away as it will stay in the project.
- WSS (water soluble stabiliser) (If using minky or a heavy pile)
- Fleece, minky, faux fur, any stretch fabric for the **front**
 - cut 1 @ 260x170mm – minky, fur fleece, etc - stretchy
- Woven – calico or similar for the **casing**
 - cut 1 @ 250x60mm – calico or similar – woven fabric
- Woven (thin) for **backing fabric** – ENSURE IT IS NOT TOO THICK OR YOUR SLAP BANDS WILL STRUGGLE TO WORK WITH THE THICKNESS.
 - cut 1 @ 260x170mm – thinnish fabric, I have used a co-ordinating woven, eg monsters
- Slap band

Tools

- Haemostats (forceps) are invaluable for turning and helping with stuffing, especially the IV buddy's



Stretch ALWAYS goes across the tummy on my stuffies.

Instructions

Hoop stabiliser

Colour stop 1 - Stitch the placement line for the front fabric – sorry, I forgot to take a photo of this -its just a rectangle



Lay the front fabric over the placement line, if using a minky, or fur, make sure your pile is facing the correct way, (it should be going towards the bottom of the stitching) tape in place and stitch the tackdown



Colour stop 2 Stitch the tackdown



Add some washaway stabiliser if you need (I have just taped it down for this project, see pic below)



Stitch the details of the buddy – Colour stops up until label placement



I put labels on everything I make so people know where the toy came from

If you are not putting a label in your stuffie, skip the next 2 steps

Stitch label placement line



Tape your label in place over the placement line



Stitch the label tackdown



Stitch the casing placement line



Stitch map instruction – Add lining under the hoop

Take the hoop off the machine and turn over

Place your casing fabric over the placement line, UNDER THE HOOP, tape in place and put the hoop back on the machine



Stitch the casing tackdown (shown below is the back of the hoop)



Stitch the remainder of the body details

Stitch map instruction – Add backing fabric

Add the backing fabric right side down over the hoop, ensuring that your original placement line is covered.

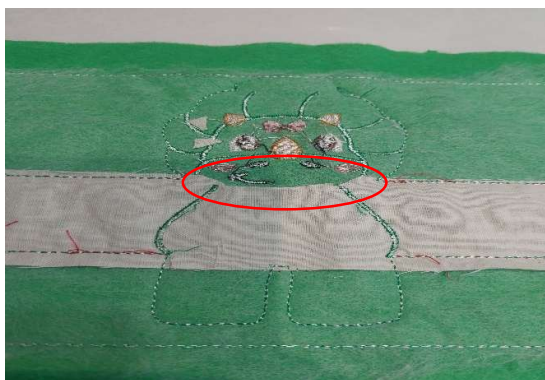


Stitch the closing stitches



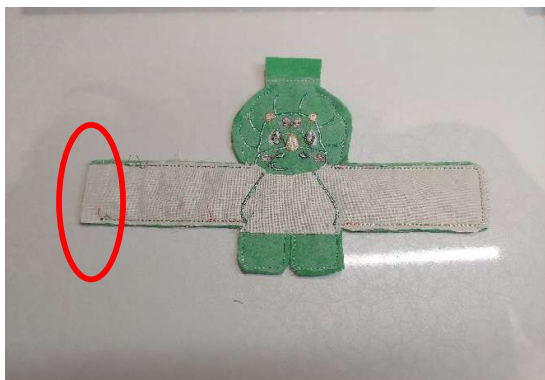
Remove hoop from the machine

OPTIONAL – but recommended - Trim out any casing fabric around the head down to the neckline



Trim the edge approx 5mm from closing stitches , leaving the gate (opening) longer as this will help with turning and closing.

Snip into any change of direction to help with turning. And sitting flat.



Turn out the right way – I highly recommend using haemostats (forceps)

Push the slap band inside the opening on the arm, between the casing and the backing fabric



Stuff your buddy through the head opening hole (I recommend using the haemostats to get down into the feet) and ensure you poke it **in front of the casing (slap band)** to avoid a bulky back.

DO NOT OVERSTUFF – OR YOUR SLAP BAND WON'T WORK PROPERLY

Stitch or glue the openings closed.

Your IV buddy is complete.

See some of our tester pics below.



